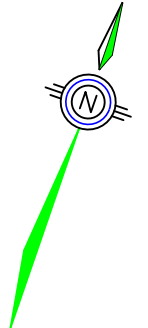
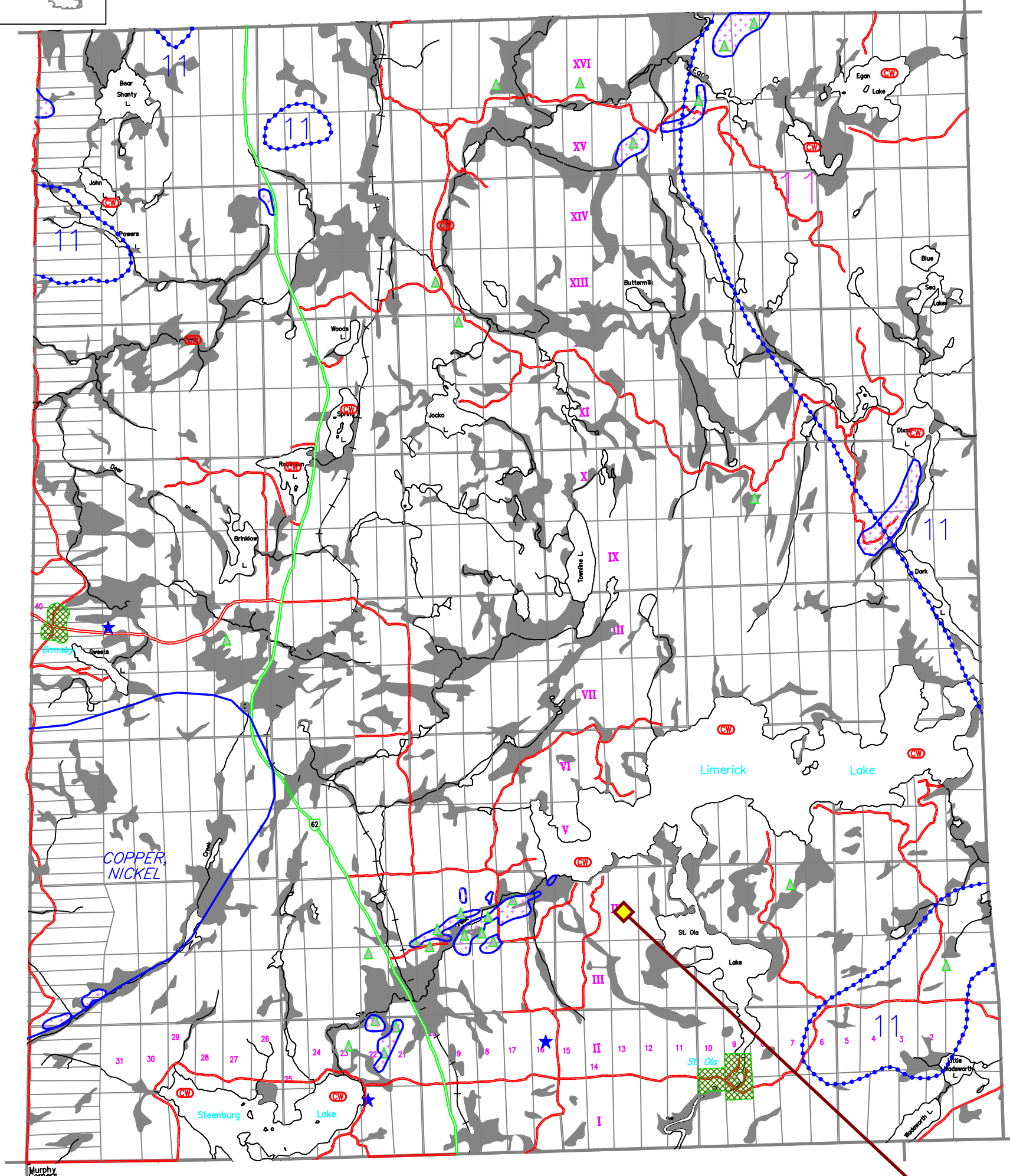
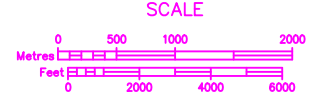


Ainley Graham and Associates Limited.
Consulting Engineers and Planners
Collingwood - Barrie - Belleville - Ottawa

SCALE: 1:30000	PLOT: 1-30	JOB NO. 97550-1
DESIGN: K.R.S.	CHECKED: B.B.	DWG. 97550-1
DRAWN: K.R.S.	DATE: 3/24/98	

- LEGEND**
- AGRICULTURAL
 - ENVIRONMENTAL PROTECTION
 - ENVIRONMENTALLY SENSITIVE
 - SIGNIFICANT WETLANDS
 - RURAL
 - HAMLET
 - URBAN
 - EXTRACTIVE
 - EXTRACTIVE (RESERVE)
 - WASTE DISPOSAL SITES
 - COLD WATER FISHERIES (STREAMS AND LAKES)
 - FLOODLINE
 - PROVINCIAL HIGHWAYS
 - MUNICIPAL ROADS
 - PRIVATE ROADS
 - UNOPENED ROAD ALLOWANCES
 - PRECAMBRIAN



TOWNSHIP OF LIMERICK

OFFICIAL PLAN OF THE COUNTY OF HASTINGS
SCHEDULE 'A9' (modified)

See OPA #6
Relocation of
Environmental
Protection Areas