



Ainley Graham and Associates Limited.
Consulting Engineers and Planners

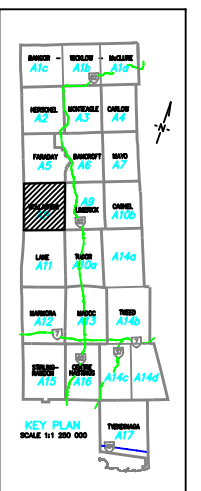
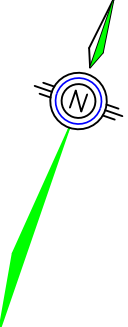
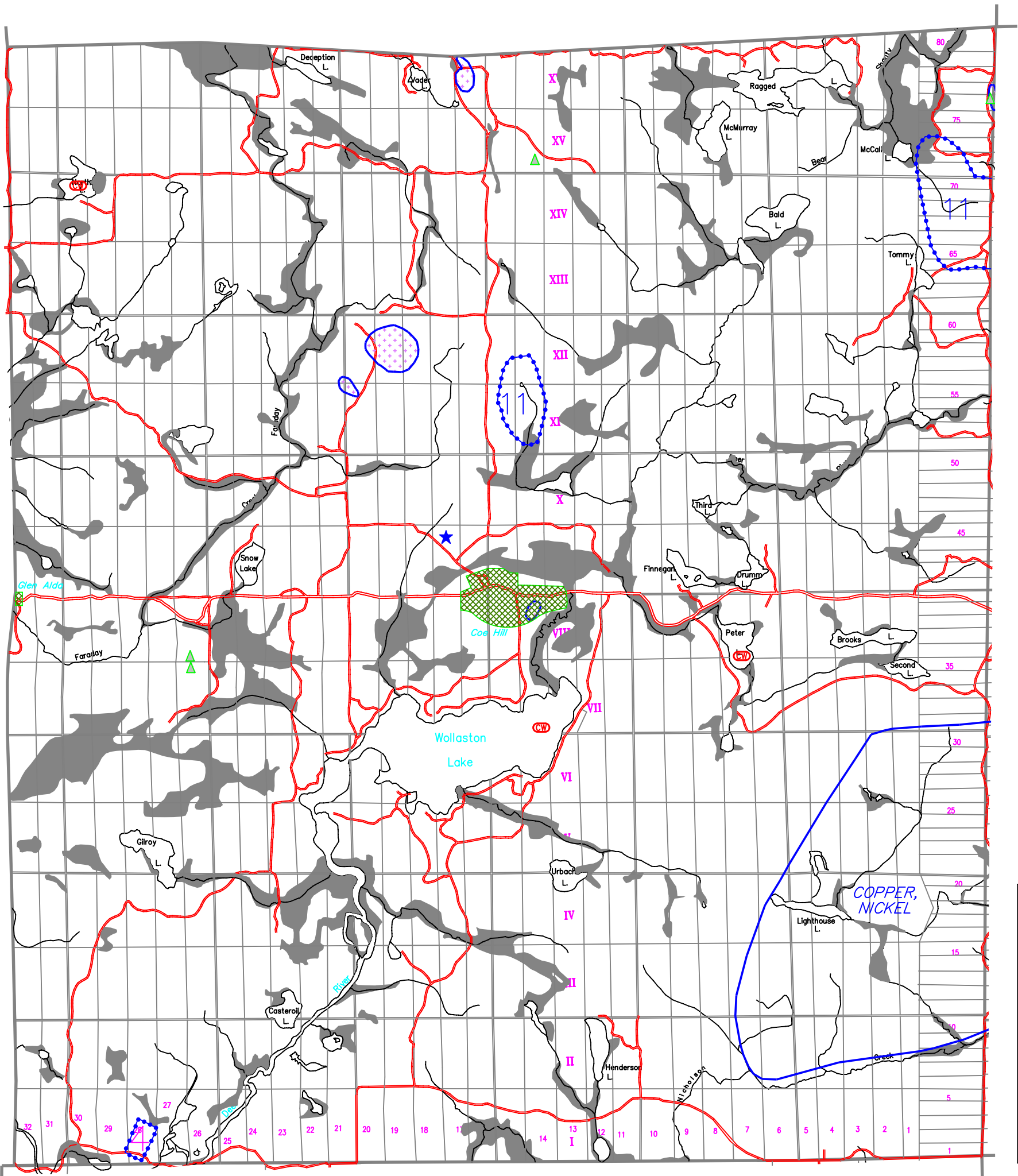
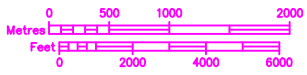
Collingwood - Barrie - Belleville - Ottawa

SCALE: 1:30000	PLOT: 1=30	JOB NO. 97550-1
DESIGN:	CHECKED: B.B.	
DRAWN: K.R.S.	DATE: 3/24/98	DWG. 97550-1

LEGEND

- AGRICULTURAL
- ENVIRONMENTAL PROTECTION
- ENVIRONMENTALLY SENSITIVE
- SIGNIFICANT WETLANDS
- RURAL
- HAMLET
- URBAN
- EXTRACTIVE
- EXTRACTIVE (RESERVE)
- WASTE DISPOSAL SITES
- COLD WATER FISHERIES (STREAMS AND LAKES)
- FLOODLINE
- PROVINCIAL HIGHWAYS
- MUNICIPAL ROADS
- PRIVATE ROADS
- UNOPENED ROAD ALLOWANCES
- PRECAMBRIAN

SCALE



TOWNSHIP OF WOLLASTON

**OFFICIAL PLAN OF THE COUNTY OF HASTINGS
 SCHEDULE 'A8'**