

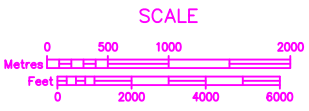


Ainley Graham and Associates Limited.

Consulting Engineers and Planners

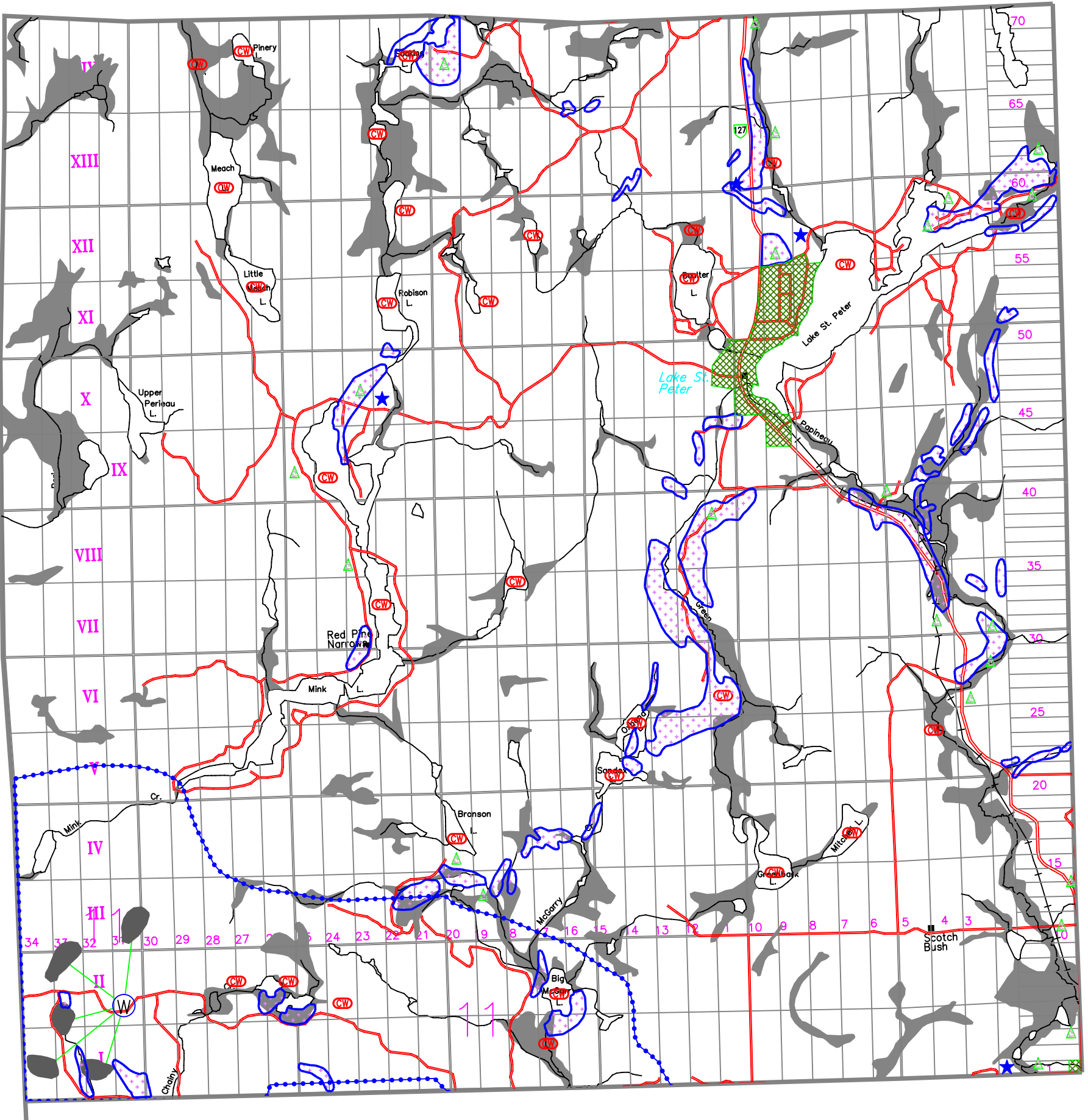
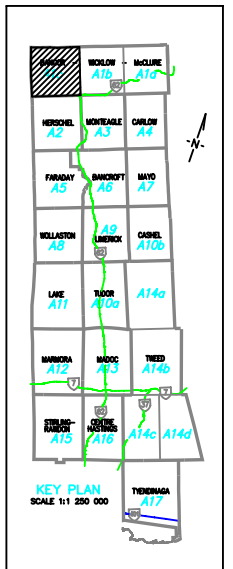
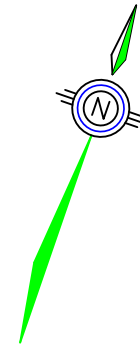
Collingwood - Barrie - Belleville - Ottawa

SCALE: 1:30000	PLOT: 1=30	JOB NO. 97550-1
DESIGN: B.B.	CHECKED: B.B.	
DRAWN: K.R.S.	DATE: 3/24/98	DWG. 97550-1



**LEGEND**

- AGRICULTURAL
- ENVIRONMENTAL PROTECTION
- ENVIRONMENTALLY SENSITIVE
- SIGNIFICANT WETLANDS
- RURAL
- HAMLET
- URBAN
- EXTRACTIVE (ACTIVE)
- EXTRACTIVE (RESERVE)
- WASTE DISPOSAL SITES
- COLD WATER FISHERIES (STREAMS AND LAKES)
- FLOODLINE
- PROVINCIAL HIGHWAYS
- MUNICIPAL ROADS
- PRIVATE ROADS
- UNOPENED ROAD ALLOWANCES
- PRECAMBRIAN



# TOWNSHIP OF BANGOR — WICKLOW — McCLURE

## (McCLURE)

OFFICIAL PLAN OF THE COUNTY OF HASTINGS  
SCHEDULE 'A1c-1'