



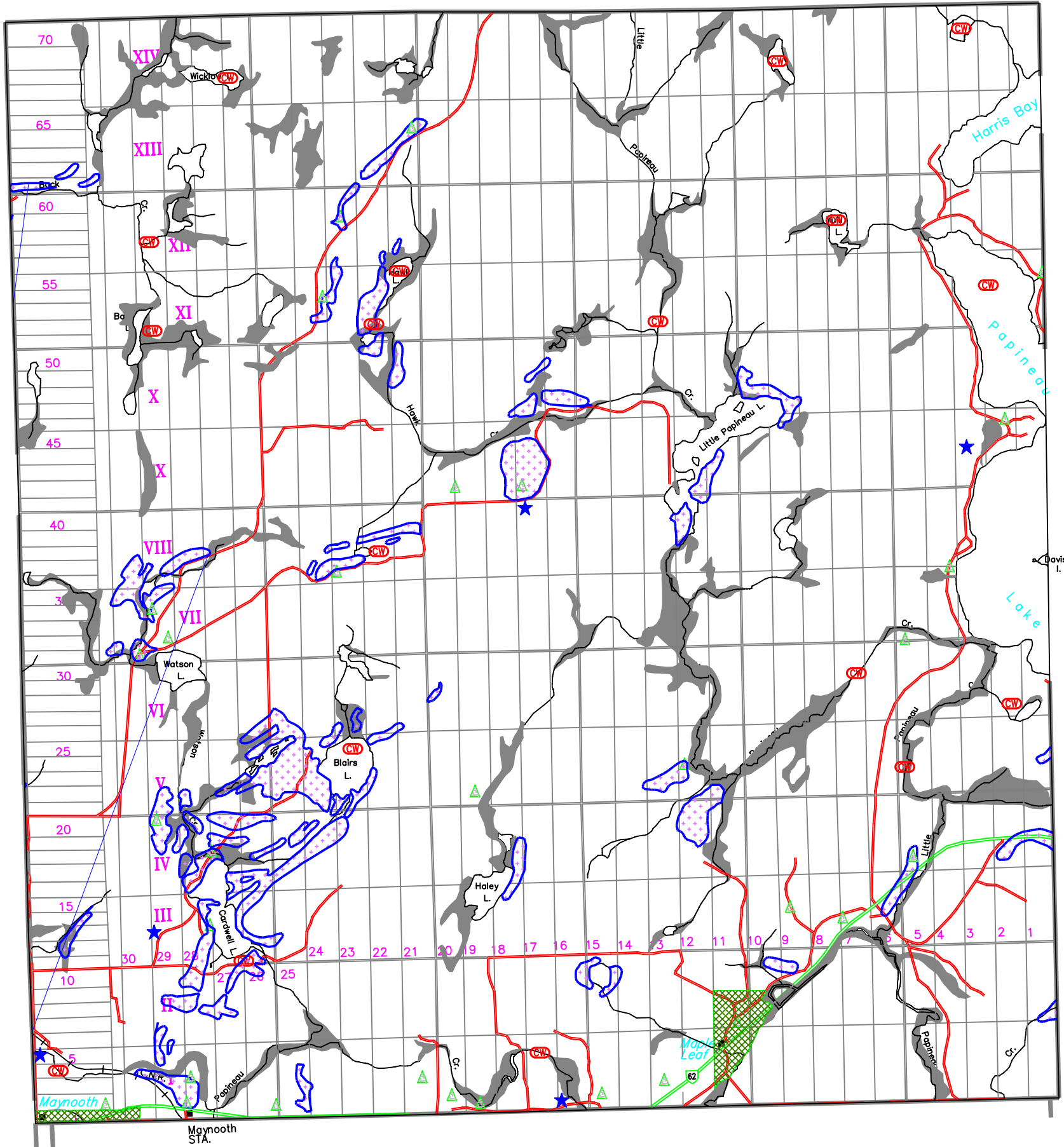
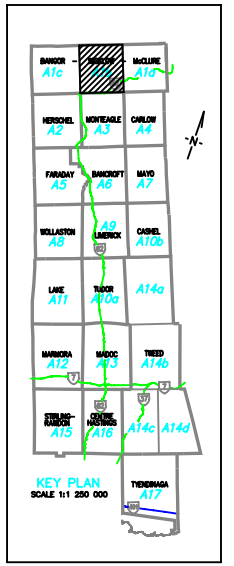
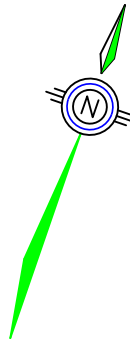
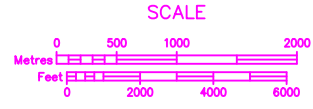
Ainley Graham and Associates Limited.
Consulting Engineers and Planners

Collingwood - Barrie - Belleville - Ottawa

SCALE: 1:30000	PLOT: 1=30	JOB NO. 97550-1
DESIGN:	CHECKED: B.B.	
DRAWN: K.R.S.	DATE: 3/24/98	DWG. 97550-1

LEGEND

- AGRICULTURAL
- ENVIRONMENTAL PROTECTION
- ENVIRONMENTALLY SENSITIVE
- SIGNIFICANT WETLANDS
- RURAL
- HAMLET
- URBAN
- EXTRACTIVE (ACTIVE)
- EXTRACTIVE (RESERVE)
- WASTE DISPOSAL SITES
- COLD WATER FISHERIES (STREAMS AND LAKES)
- FLOODLINE
- PROVINCIAL HIGHWAYS
- MUNICIPAL ROADS
- PRIVATE ROADS
- UNOPENED ROAD ALLOWANCES
- PRECAMBRIAN



TOWNSHIP OF BANGOR — WICKLOW — McCLURE
(WICKLOW)

OFFICIAL PLAN OF THE COUNTY OF HASTINGS
SCHEDULE 'A1b'