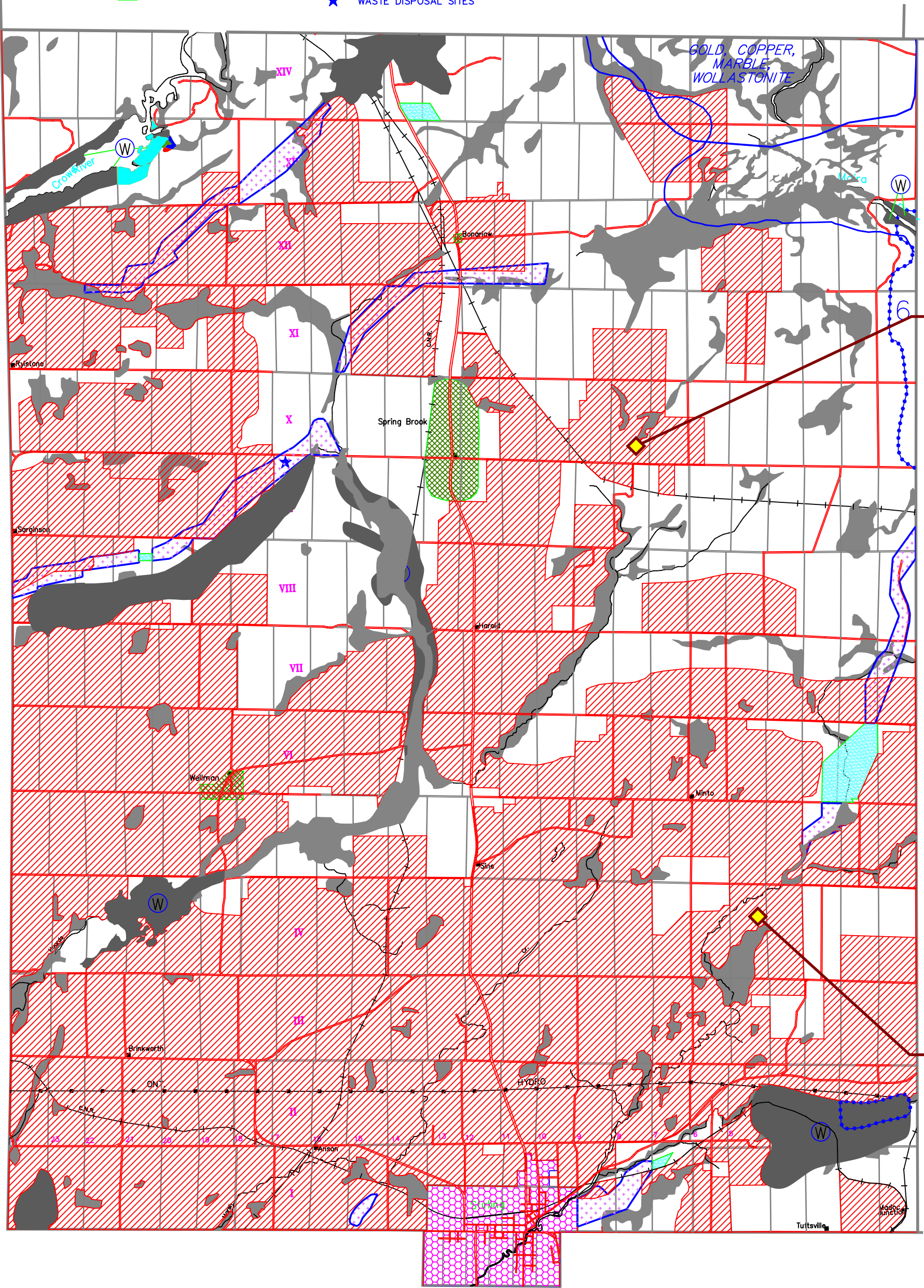
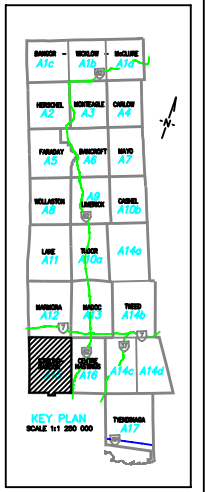


LEGEND

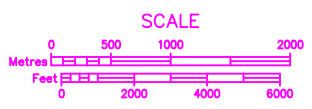
-  AGRICULTURAL
-  ENVIRONMENTAL PROTECTION
-  ENVIRONMENTALLY SENSITIVE
-  SIGNIFICANT WETLANDS
-  HAMLET
-  URBAN
-  EXTRACTIVE
-  EXTRACTIVE (RESERVE)
-  WASTE DISPOSAL SITES
-  RURAL
-  COLD WATER FISHERIES (STREAMS AND LAKES)
-  FLOODLINE
-  PROVINCIAL HIGHWAYS
-  MUNICIPAL ROADS
-  PRIVATE ROADS
-  UNOPENED ROAD ALLOWANCES
-  PRECAMBRIAN



See OPA #3
Agricultural to
Agricultural
Special



See OPA#9
Agricultural
to Rural



TOWNSHIP OF STIRLING-RAWDON

OFFICIAL PLAN OF THE COUNTY OF HASTINGS
SCHEDULE 'A15-1' (modified)