



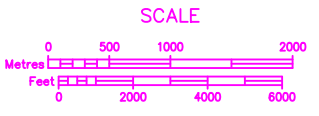
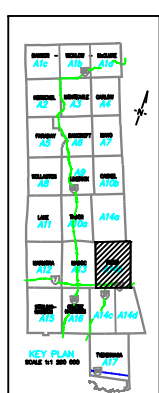
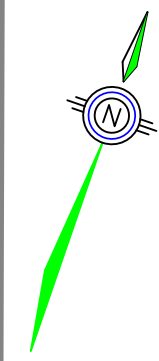
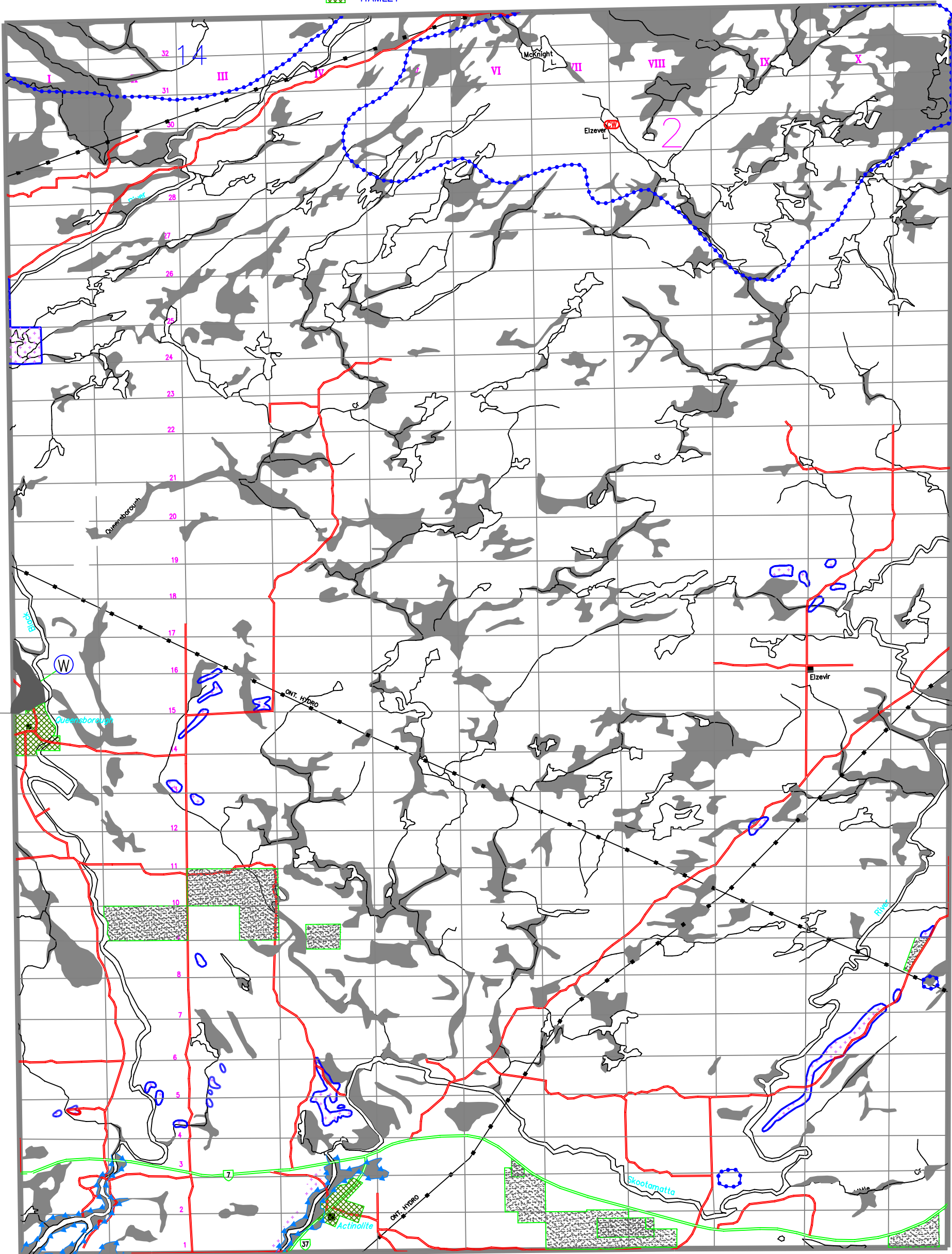
Ainley Graham and Associates Limited.
Consulting Engineers and Planners

Collingwood - Barrie - Belleville - Ottawa

SCALE: 1:30000 PLOT: 1=30 JOB NO. 97550-1
DESIGN: CHECKED: B.B.
DRAWN: K.R.S. DATE: 3/24/98 DWG. 97550-1

LEGEND

- AGRICULTURAL
- ENVIRONMENTAL PROTECTION
- ENVIRONMENTALLY SENSITIVE
- SIGNIFICANT WETLANDS
- RURAL
- HAMLET
- URBAN
- PRECAMBRIAN
- EXTRACTIVE
- EXTRACTIVE (RESERVE)
- WASTE DISPOSAL SITES
- COLD WATER FISHERIES (STREAMS AND LAKES)
- PROVINCIAL HIGHWAYS
- MUNICIPAL ROADS
- PRIVATE ROADS
- UNOPENED ROAD ALLOWANCES
- FLOODLINE



TWEED

*OFFICIAL PLAN OF THE COUNTY OF HASTINGS
SCHEDULE 'A14b-1'*