
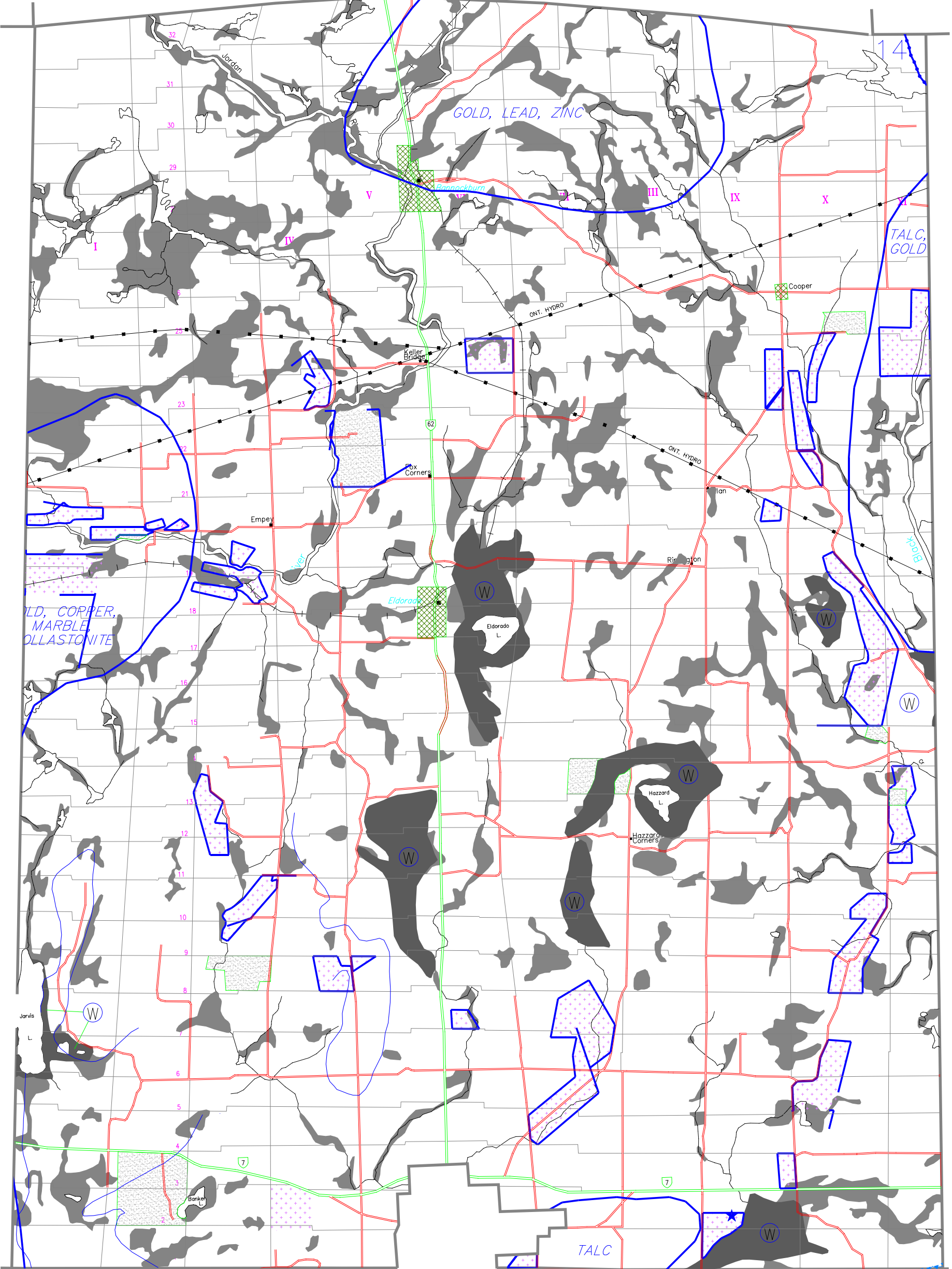
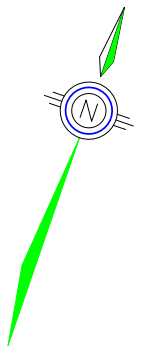
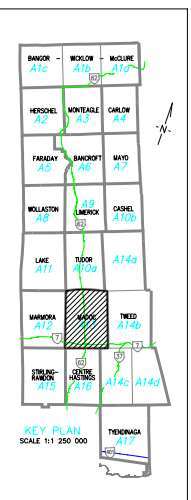


LEGEND

-  AGRICULTURAL
-  ENVIRONMENTAL PROTECTION
-  ENVIRONMENTALLY SENSITIVE
-  SIGNIFICANT WETLANDS
-  RURAL
-  HAMLET
-  URBAN
-  PRIVATE ROADS
-  UNOPENED ROAD ALLOWANCES
-  WASTE DISPOSAL SITES
-  COLD WATER FISHERIES (STREAMS AND LAKES)
-  FLOODLINE
-  PROVINCIAL HIGHWAYS
-  PRECAMBRIAN
-  MUNICIPAL ROADS
-  EXTRACTIVE
-  EXTRACTIVE (RESERVE)



TOWNSHIP OF MADOC

OFFICIAL PLAN OF THE COUNTY OF HASTINGS
SCHEDULE 'A13-1'

SCALE

