





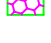






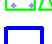




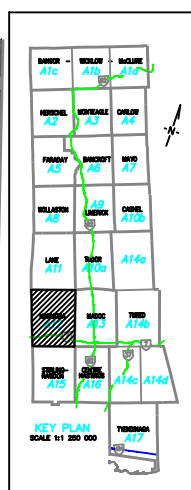
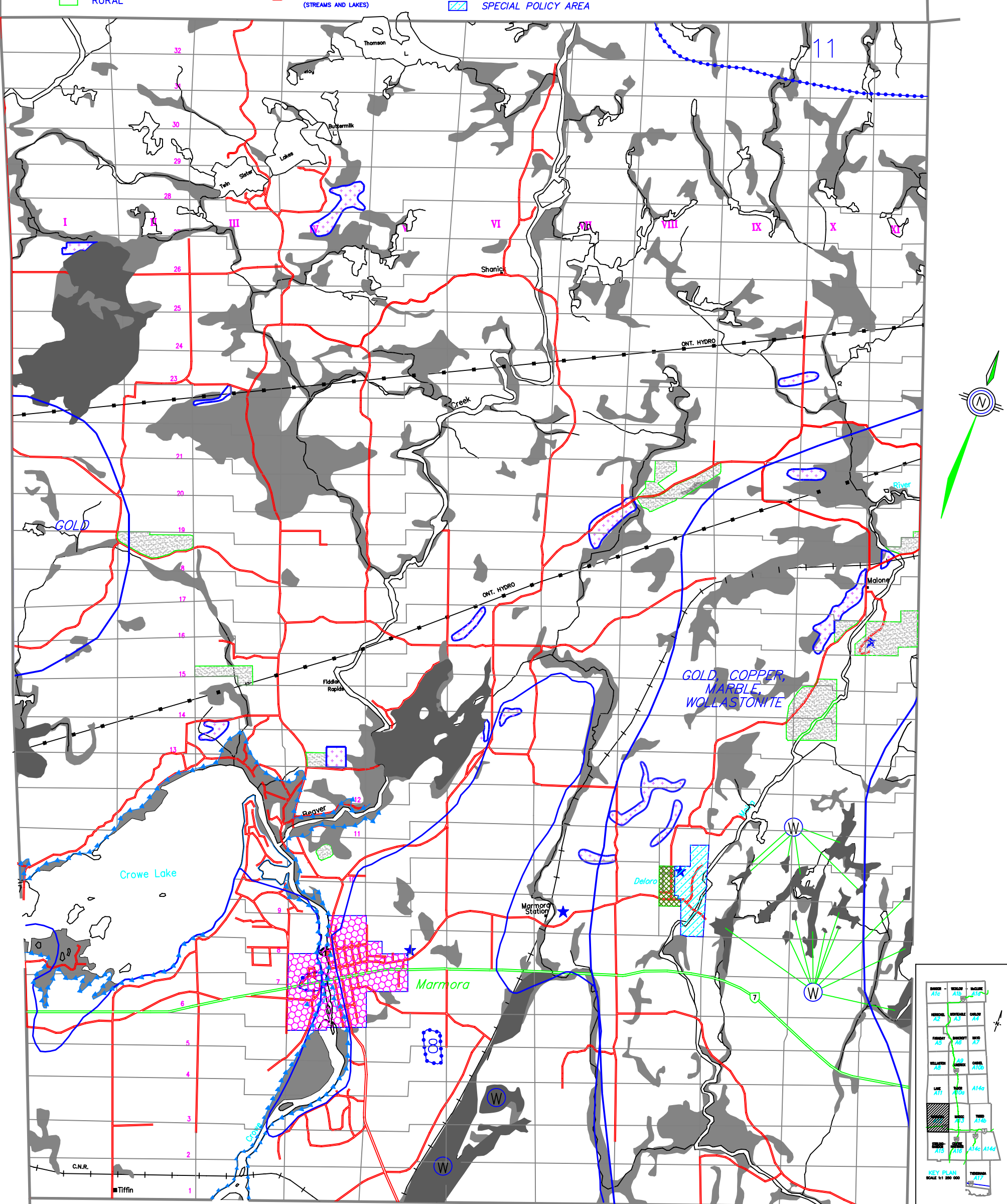


LEGEND

-  AGRICULTURAL
-  ENVIRONMENTAL PROTECTION
-  ENVIRONMENTALLY SENSITIVE
-  SIGNIFICANT WETLANDS
-  RURAL
-  HAMLET
-  URBAN
-  PRECAMBRIAN
-  WASTE DISPOSAL SITES
-  FLOODLINE
-  COLD WATER FISHERIES (STREAMS AND LAKES)
-  PROVINCIAL HIGHWAYS
-  MUNICIPAL ROADS
-  EXTRACTIVE
-  EXTRACTIVE (RESERVE)
-  PRIVATE ROADS
-  UNOPENED ROAD ALLOWANCES
-  SPECIAL POLICY AREA

Ainley Graham and Associates Limited.
 Consulting Engineers and Planners
 Collingwood - Barrie - Belleville - Ottawa

SCALE: 1:30000	PLOT: 1-30	JOB NO. 97550-1
DESIGN: K.R.S.	CHECKED: B.B.	DWG. 97550-1
DRAWN: K.R.S.	DATE: 3/24/98	



TOWNSHIP OF MARMORA

OFFICIAL PLAN OF THE COUNTY OF HASTINGS SCHEDULE 'A12'

