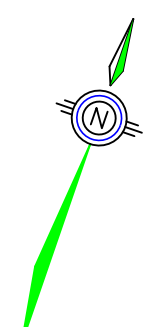
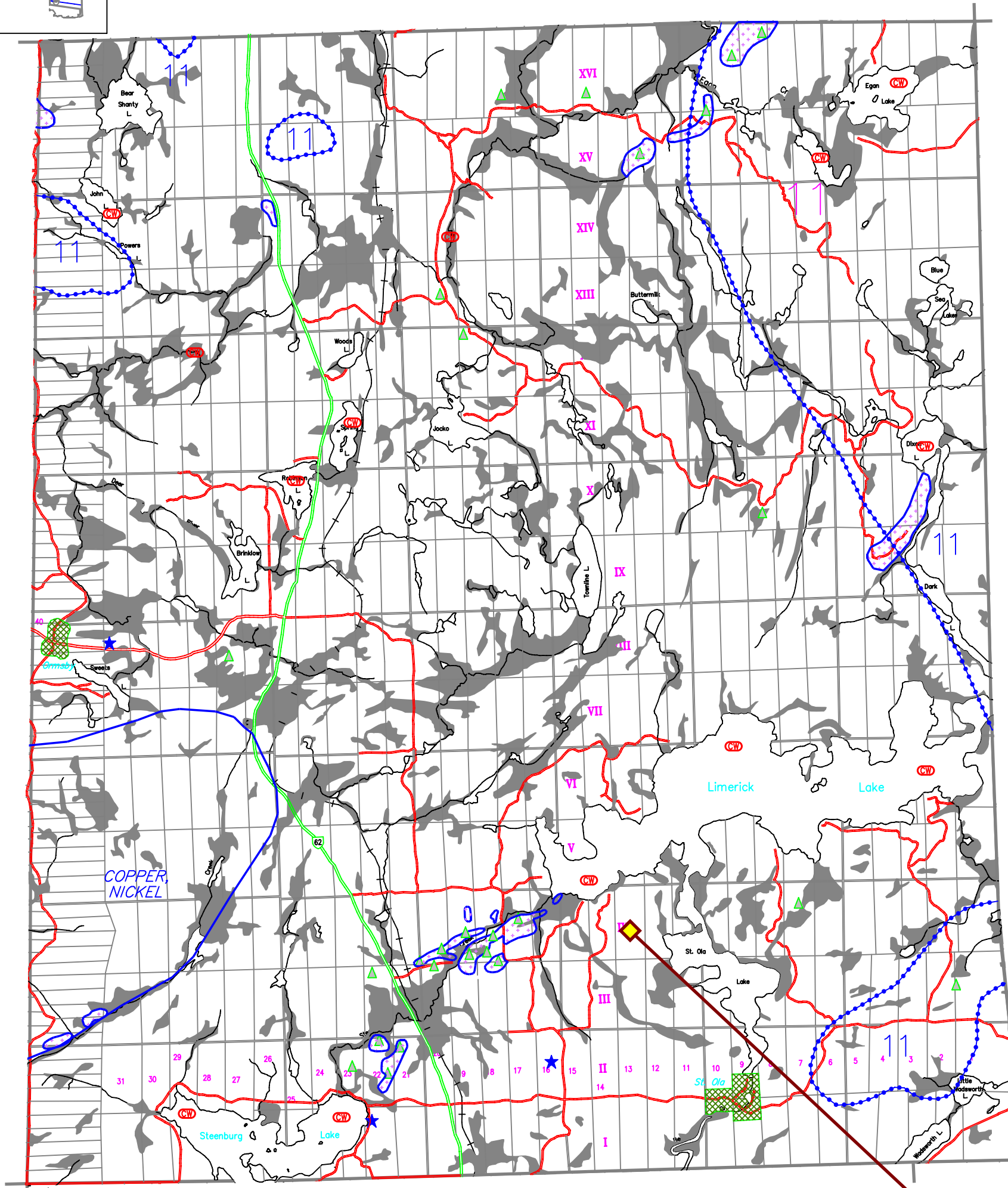
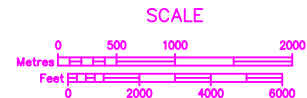


Ainley Graham and Associates Limited.
 Consulting Engineers and Planners
 Collingwood - Barrie - Belleville - Ottawa

SCALE: 1:30000	PLOT: 1-30	JOB NO. 97550-1
DESIGN: K.R.S.	CHECKED: B.B.	DWG. 97550-1
DRAWN: K.R.S.	DATE: 3/24/98	

LEGEND

- AGRICULTURAL
- ENVIRONMENTAL PROTECTION
- ENVIRONMENTALLY SENSITIVE
- SIGNIFICANT WETLANDS
- RURAL
- HAMLET
- URBAN
- EXTRACTIVE
- EXTRACTIVE (RESERVE)
- WASTE DISPOSAL SITES
- COLD WATER FISHERIES (STREAMS AND LAKES)
- FLOODLINE
- PROVINCIAL HIGHWAYS
- MUNICIPAL ROADS
- PRIVATE ROADS
- UNOPENED ROAD ALLOWANCES
- PRECAMBRIAN



TOWNSHIP OF LIMERICK

OFFICIAL PLAN OF THE COUNTY OF HASTINGS
 SCHEDULE 'A9' (modified)

See OPA #6
 Relocation of
 Environmental
 Protection Areas