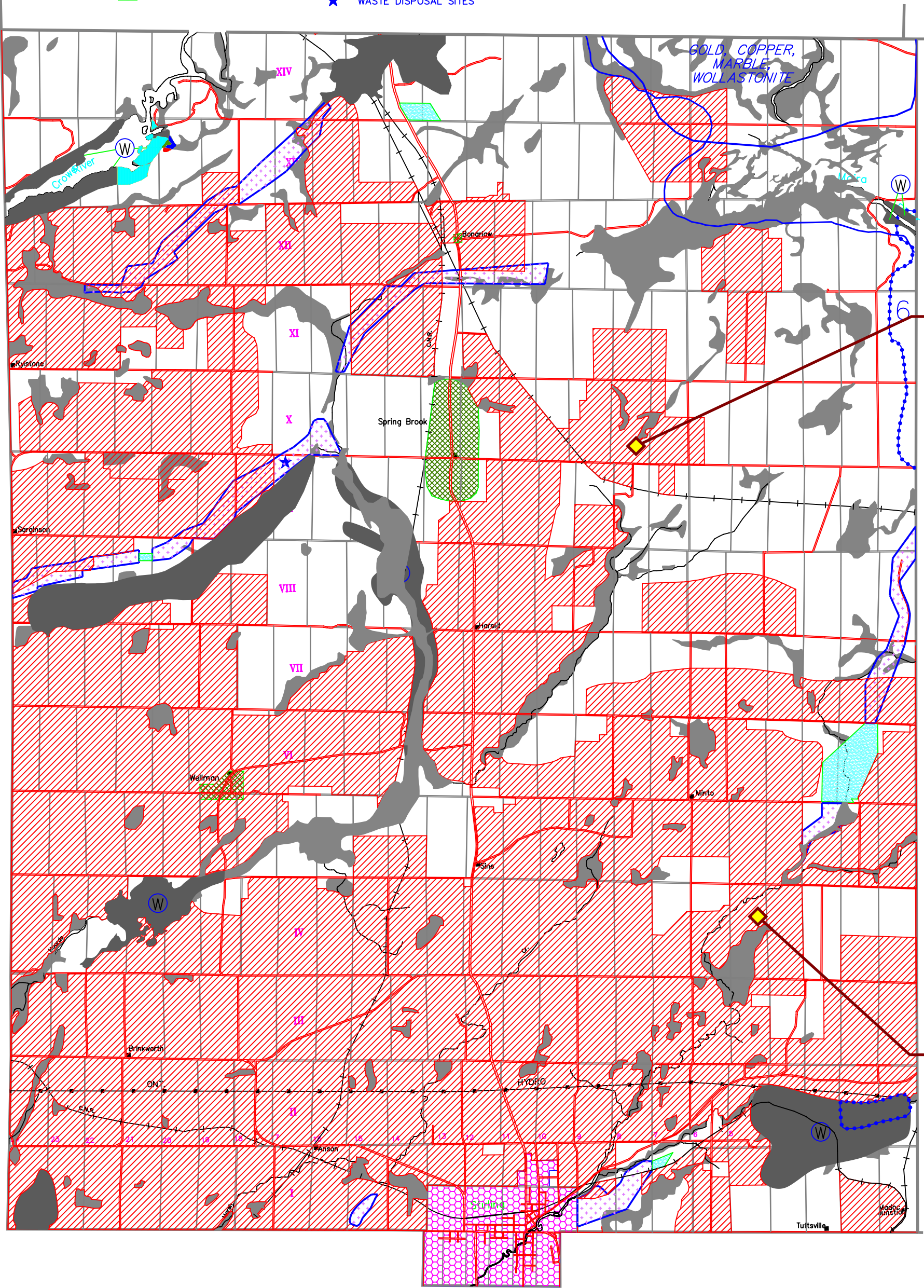


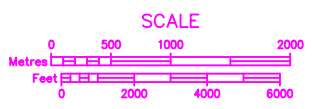
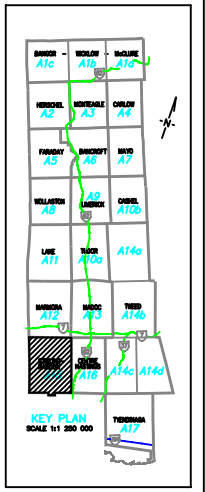
**LEGEND**

-  AGRICULTURAL
-  ENVIRONMENTAL PROTECTION
-  ENVIRONMENTALLY SENSITIVE
-  SIGNIFICANT WETLANDS
-  HAMLET
-  URBAN
-  EXTRACTIVE
-  EXTRACTIVE (RESERVE)
-  WASTE DISPOSAL SITES
-  RURAL
-  COLD WATER FISHERIES (STREAMS AND LAKES)
-  FLOODLINE
-  PROVINCIAL HIGHWAYS
-  MUNICIPAL ROADS
-  PRIVATE ROADS
-  UNOPENED ROAD ALLOWANCES
-  PRECAMBRIAN



See OPA #3  
Agricultural to  
Agricultural  
Special

See OPA#9  
Agricultural  
to Rural



# TOWNSHIP OF STIRLING-RAWDON

OFFICIAL PLAN OF THE COUNTY OF HASTINGS  
SCHEDULE 'A15-1' (modified)